

**Aviary Mesh 6.35mm 0.63mm**



SSWM 06.35 0.63 ----

Mesh	6.35 x 6.35 mm	Rolls: 30 m
Diameter	0.63 mm	
Finish	Mill	
Kg/m <sup>2</sup>	0.79 Kg/m <sup>2</sup>	
% Open	81 % Approx	
Grade	304 / 316	

**Aviary Mesh 6.35mm 0.80mm**



SSWM 06.35 0.8 ----

Mesh	6.35 x 6.35 mm	Rolls: 30 m
Diameter	0.80 mm	
Finish	Mill	
Kg/m <sup>2</sup>	1.26 Kg/m <sup>2</sup>	
% Open	76 % Approx	
Grade	304 / 316	

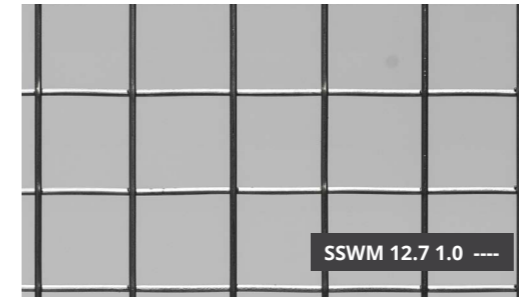
**Aviary Mesh 9.50mm 1.00mm**



SSWM 09.50 1.0 ----

Mesh	9.50 x 9.50 mm	Rolls: 30 m
Diameter	1.00 mm	
Finish	Mill	
Kg/m <sup>2</sup>	1.31 Kg/m <sup>2</sup>	
% Open	80 % Approx	
Grade	304 / 316	

**Aviary Mesh 12.7mm 1.00mm**



SSWM 12.7 1.0 ----

Mesh	12.7 x 12.7 mm	Rolls: 30 m
Diameter	1.00 mm	
Finish	Mill	
Kg/m <sup>2</sup>	0.98 Kg/m <sup>2</sup>	
% Open	85 % Approx	
Grade	304 / 316	

**Aviary Mesh 12.7mm 1.20mm**



SSWM 12.7 1.2 ----

Mesh	12.7 x 12.7 mm	Rolls: 30 m
Diameter	1.20 mm	
Finish	Mill	
Kg/m <sup>2</sup>	1.75 Kg/m <sup>2</sup>	
% Open	82 % Approx	
Grade	304 / 316	

**Zoo Mesh 12.7mm 1.60mm**



SSWM 12.7 1.6 ----

Mesh	12.7 x 12.7 mm	Rolls: 30 m
Diameter	1.60 mm	
Finish	Mill	
Kg/m <sup>2</sup>	2.51 Kg/m <sup>2</sup>	
% Open	76 % Approx	
Grade	304 / 316	

**Zoo Mesh 12.7x25.4mm 1.60mm**



SSWM 12.8 1.6 ----

Mesh	12.7 x 25.4 mm	Rolls: 30 m
Diameter	1.60 mm	
Finish	Mill	
Kg/m <sup>2</sup>	1.07 Kg/m <sup>2</sup>	
Grade	304 / 316	

**Zoo Mesh 25.4mm 2.00mm**



SSWM 25.4 2.0 ----

Mesh	25.4 x 25.4 mm	Rolls: 30 m
Diameter	2.00 mm	
Finish	Mill	
Kg/m <sup>2</sup>	1.97 Kg/m <sup>2</sup>	
% Open	85 % Approx	
Grade	304 / 316	

**Aviary Mesh 25mm 2.5mm**



SSWP 025x025 2.50 ----

Mesh	25 x 25 mm	Panel: 2400 x 1200 mm
Diameter	2.50 mm	
Finish	Mill	
Kg/m <sup>2</sup>	3.2 Kg/m <sup>2</sup>	
Grade	304 / 316	

**Aviary Mesh 25mm 3.00mm**



SSWP 025x025 3.00 ----

Mesh	25 x 25 mm	Panel: 2400 x 1200 mm
Diameter	3.00 mm	
Finish	Mill	
Kg/m <sup>2</sup>	4.5 Kg/m <sup>2</sup>	
Grade	304 / 316	

**Aviary Mesh 50mm 4.00mm**



SSWP 050x050 4.00 ----

Mesh	50 x 50 mm	Panel: 2400 x 1200 mm
Diameter	4.00 mm	
Finish	Mill	
Kg/m <sup>2</sup>	4. Kg/m <sup>2</sup>	
Grade	304 / 316	

**Aviary Mesh 50mm 5.00 mm**



SSWP 050x050 5.00 ----

Mesh	50 x 50 mm	Panel: 2400 x 1200 mm
Diameter	5.00 mm	
Finish	Mill	
Kg/m <sup>2</sup>	6.4 Kg/m <sup>2</sup>	
Grade	304 / 316	

**Stainless Steel Aviary / Zoo Mesh**  
The use of stainless steel welded mesh in the construction of aviaries is widely regarded as the safest and the superior alternative to galvanized mesh. Galvanized mesh causes zinc poisoning as the birds lick and chew the mesh, by doing so ingesting zinc from the wire which can be fatal.

To read further about the danger of heavy metal poisoning in birds, click on the following link to the *Bird Vet Melbourne*.

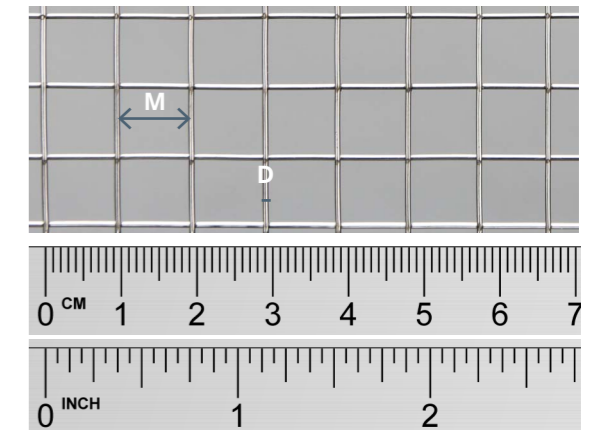
**You have made 'The Lasting Decision' and now it is time to evaluate 'The Lasting Look'.**

- Design & Install Considerations:**  
Practical information for your consideration.
- Cleaning, Care & Maintenance:**  
Regular cleaning is recommended to prevent the build-up of contaminants such as dirt and salt.

**Technical Information to assist with selection & specifying**

- Technical Data Sheets:**  
Our technical data sheets are an incredibly powerful tool and available on [sswm.com.au](http://sswm.com.au)
- Samples:**  
Please contact [sales@sswm.com.au](mailto:sales@sswm.com.au) to request samples of our Aviary / Zoo Mesh range to determine which mesh best meets your requirements.

**Glossary Welded Mesh:**  
**Mesh (welded)** - The distance between two adjacent parallel wires, measured from centre to centre of the wires.  
**Diameter** - the thickness of the wire before processing



*This document is to scale when printed to A3 with no scaling applied. Please use ruler above to check your scale. Images are provided as a guide only.*



**Vermin & Rodent Mesh 6.35mm 0.63mm**



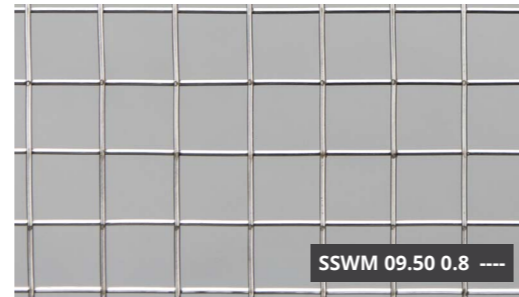
Mesh	6.35 x 6.35 mm	Rolls: 30 m
Diameter	0.63 mm	
Finish	Mill	
Kg/m <sup>2</sup>	0.79 Kg/m <sup>2</sup>	
% Open	81 % Approx	
Grade	304 / 316	

**Vermin & Rodent Mesh 6.35mm 0.80mm**



Mesh	6.35 x 6.35 mm	Rolls: 30 m
Diameter	0.80 mm	
Finish	Mill	
Kg/m <sup>2</sup>	1.26 Kg/m <sup>2</sup>	
% Open	76 % Approx	
Grade	304 / 316	

**Vermin & Rodent Mesh 9.50mm 0.80mm**



Mesh	9.50 x 9.50 mm	Rolls: 30 m
Diameter	0.80 mm	
Finish	Mill	
Kg/m <sup>2</sup>	0.82 Kg/m <sup>2</sup>	
% Open	84 % Approx	
Grade	316	

**Vermin & Rodent Mesh 9.50mm 1.00mm**



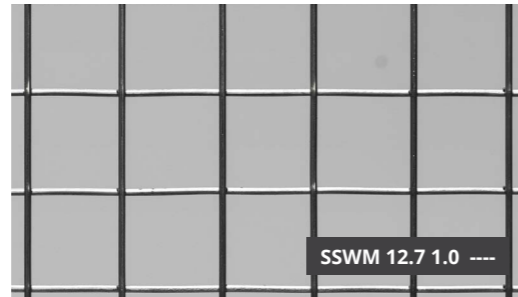
Mesh	9.50 x 9.50 mm	Rolls: 30 m
Diameter	1.00 mm	
Finish	Mill	
Kg/m <sup>2</sup>	1.31 Kg/m <sup>2</sup>	
% Open	80 % Approx	
Grade	304 / 316	

**Vermin & Rodent Mesh 11.0mm 0.80mm**



Mesh	11.0 x 11.0 mm	Rolls: 30 m
Diameter	0.80 mm	
Finish	Mill	
Kg/m <sup>2</sup>	0.74 Kg/m <sup>2</sup>	
% Open	86 % Approx	
Grade	304 / 316	

**Vermin & Rodent Mesh 12.7mm 1.00mm**



Mesh	12.7 x 12.7 mm	Rolls: 30 m
Diameter	1.00 mm	
Finish	Mill	
Kg/m <sup>2</sup>	0.98 Kg/m <sup>2</sup>	
% Open	85 % Approx	
Grade	304 / 316	

**Vermin & Rodent Mesh 12.7mm 1.20mm**



Mesh	12.7 x 12.7 mm	Rolls: 30 m
Diameter	1.20 mm	
Finish	Mill	
Kg/m <sup>2</sup>	1.75 Kg/m <sup>2</sup>	
% Open	82 % Approx	
Grade	304 / 316	

**Vermin & Rodent Mesh 12.7mm 1.60mm**



Mesh	12.7 x 12.7 mm	Rolls: 30 m
Diameter	1.60 mm	
Finish	Mill	
Kg/m <sup>2</sup>	2.51 Kg/m <sup>2</sup>	
% Open	76 % Approx	
Grade	304 / 316	

**Vermin & Rodent Mesh 25.4mm 1.60mm**



Mesh	25.4 x 25.4 mm	Rolls: 30 m
Diameter	1.60 mm	
Finish	Mill	
Kg/m <sup>2</sup>	1.26 Kg/m <sup>2</sup>	
% Open	88 % Approx	
Grade	316	

**Vermin & Rodent Mesh 25.4mm 2.00mm**



Mesh	25.4 x 25.4 mm	Rolls: 30 m
Diameter	2.00 mm	
Finish	Mill	
Kg/m <sup>2</sup>	1.97 Kg/m <sup>2</sup>	
% Open	85 % Approx	
Grade	304 / 316	

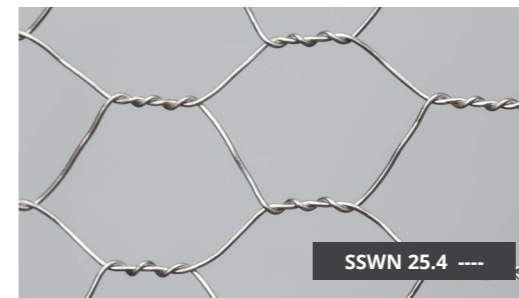
**Hexagonal Netting Flexi 12.7mm**



Aperture	12.7 mm	Rolls: 30 m
Diameter	0.63 mm	
Finish	Mill	
Type	Hexagonal Netting	
Edge Wires	Double Top & Bottom	
Grade	316	

Hexagonal Netting photo is not to scale

**Hexagonal Netting Flexi 25.4mm**



Aperture	25.4 mm	Rolls: 30 m
Diameter	0.90 mm	
Finish	Mill	
Weave Type	Hexagonal Netting	
Edge Wires	Double Top & Bottom	
Grade	316	

Hexagonal Netting photo is not to scale

You have made 'The Lasting Decision' and now it is time to evaluate 'The Lasting Look'.

**Design & Install Considerations:**  
Practical information for your consideration.

**Cleaning, Care & Maintenance:**  
Regular cleaning is recommended to prevent the build-up of contaminants such as dirt and salt.

**Technical Information to assist with selection & specifying**

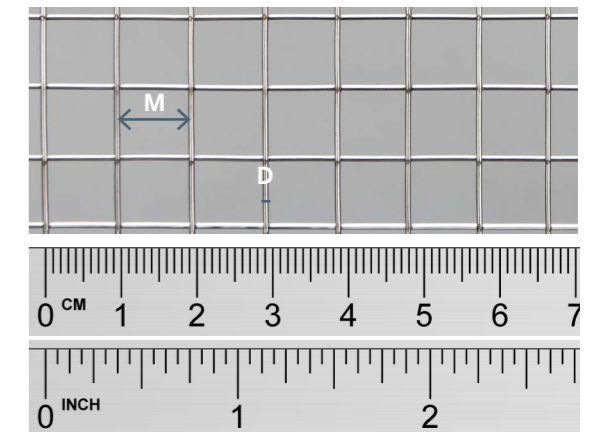
**Technical Data Sheets:**  
Our technical data sheets are an incredibly powerful tool and available on [sswm.com.au](http://sswm.com.au)

**Samples:**  
Please contact [sales@sswm.com.au](mailto:sales@sswm.com.au) to request samples of our Vermin & Rodent Mesh range to determine which mesh best meets your requirements.

**Glossary Welded Mesh:**

**Mesh (welded)** - The distance between two adjacent parallel wires, measured from centre to centre of the wires.

**Diameter** - the thickness of the wire before processing



This document is to scale when printed to A3 with no scaling applied. Please use ruler above to check your scale. Images are provided as a guide only.