



Louvre Mesh 6.35mm 0.63mm



Mesh	6.35mm
Diameter	0.63 mm
Finish	Mill
Kg/m ²	0.79 Kg/m ²
% Open	81 % Approx
Grade	304 / 316

Rolls: 30 m

Louvre Mesh 6.35mm 0.80mm



Mesh	6.35 mm
Diameter	0.80 mm
Finish	Mill
Kg/m ²	1.26 Kg/m ²
% Open	76 % Approx
Grade	304 / 316

Rolls: 30 m

Louvre Mesh 9.50mm 0.80mm



Mesh	9.50 mm
Diameter	0.80 mm
Finish	Mill
Kg/m ²	0.82 Kg/m ²
% Open	84 % Approx
Grade	316

Rolls: 30 m

Louvre Mesh 9.50mm 1.00mm



Mesh	9.50 mm
Diameter	1.00 mm
Finish	Mill
Kg/m ²	1.31 Kg/m ²
% Open	80 % Approx
Grade	304 / 316

Rolls: 30 m

Louvre Mesh Black 9.50mm 1.00mm



Mesh	9.50 mm
Diameter	1.00 mm
Finish	Black Powder Coat
Kg/m ² *	1.31 Kg/m ²
% Open*	80 % Approx
Grade	304

Rolls: 30 m

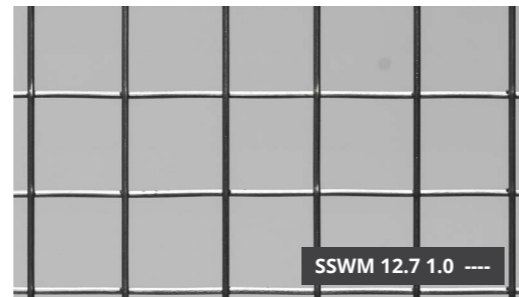
Louvre Mesh 11.00mm 0.80mm



Mesh	11.00 mm
Diameter	0.80 mm
Finish	Mill
Kg/m ²	0.74 Kg/m ²
% Open	86 % Approx
Grade	304 / 316

Rolls: 30 m

Louvre Mesh 12.7mm 1.00mm



Mesh	12.7 mm
Diameter	1.00 mm
Finish	Mill
Kg/m ²	0.98 Kg/m ²
% Open	85 % Approx
Grade	304 / 316

Rolls: 30 m

Louvre Mesh Black 12.7mm 1.00mm



Mesh	12.7 mm
Diameter	1.00 mm
Finish	Black Powder Coat
Kg/m ² *	0.98 Kg/m ²
% Open*	85 % Approx
Grade	304

Rolls: 30 m

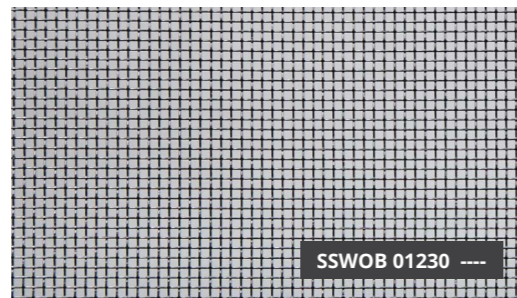
Louvre Mesh 12.7mm 1.20mm



Mesh	12.7 mm
Diameter	1.20 mm
Finish	Mill
Kg/m ²	1.75 Kg/m ²
% Open	82 % Approx
Grade	304 / 316

Rolls: 30 m

Bushfire Mesh Black Ember Stop *Flexi* (18/36.5)



Aperture	1.23 mm
Diameter	0.18 mm
Finish	Black Powder Coat
Weave Type	Plain
Kg/m ² *	0.30 Kg/m ²
% Open*	76 % Approx
Grade	316

Rolls: 15 m & 30 m

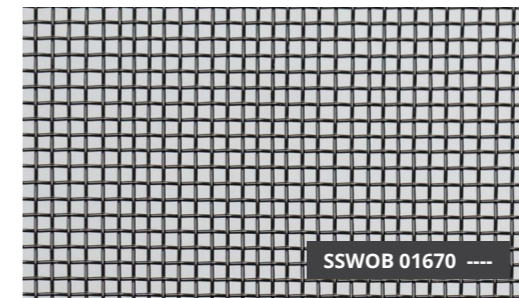
Bushfire Mesh Ember Stop *Tough* (12/26)



Aperture	1.67 mm
Diameter	0.45 mm
Finish	Mill
Weave Type	Plain
Kg/m ²	1.24 Kg/m ²
% Open	62 % Approx
Grade	304 / 316

Rolls: 30 m

Bushfire Mesh Ember Stop *Tough* (12/26)



Aperture	1.67 mm
Diameter	0.45 mm
Finish	Black Powder Coat
Weave Type	Plain
Kg/m ² *	1.24 Kg/m ²
% Open*	62 % Approx
Grade	316

Rolls: 15 m & 30 m

You have made 'The Lasting Decision' and now it is time to evaluate 'The Lasting Look'.

Design & Install Considerations:
Practical information for your consideration.

Cleaning, Care & Maintenance:
Regular cleaning is recommended to prevent the build-up of contaminants such as dirt and salt.

Technical Information to assist with selection & specifying

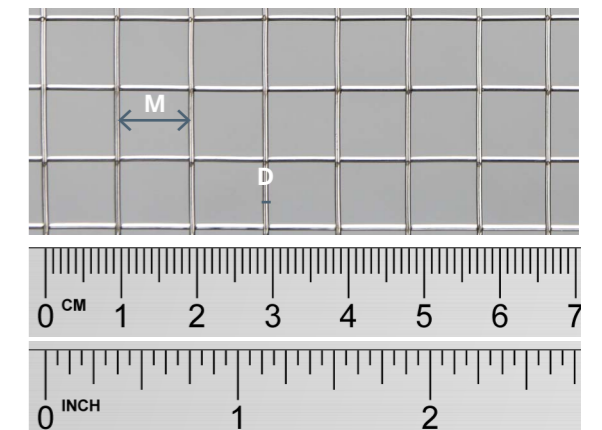
Bushfire Mesh:
SSWM bushfire mesh can be used to meet the requirements of AS3959-2009 Amdt 3 for BAL 12.5 -FZ, where mesh is referenced and if the prescribed construction requirements are met. technical data sheets are an incredibly powerful tool and available on sswm.com.au

Technical Data Sheets:
Our technical data sheets are an incredibly powerful tool and available on sswm.com.au

Samples:
Please contact sales@sswm.com.au to request samples of our Louvre / Bird Proofing Mesh range to determine which mesh best meets your requirements.

Glossary Welded Mesh:
Mesh (welded) - The distance between two adjacent parallel wires, measured from centre to centre of the wires.

Diameter - the thickness of the wire before processing



This document is to scale when printed to A3 with no scaling applied. Please use ruler above to check your scale. Images are provided as a guide only. * Pre black powder coat finish