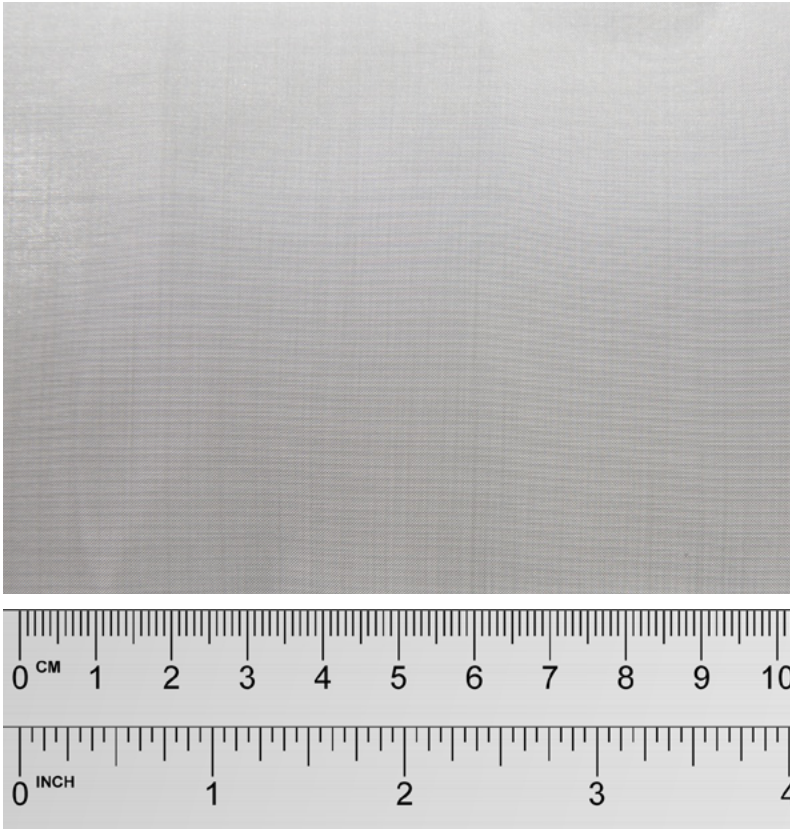
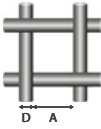


 Look Us Up www.sswm.com.au	 Email Us sales@sswm.com.au	 Call Us 1300 305 148	 Superior Quality THE LASTING DECISION
--	--	---	--



Images are provided as a guide only

METRIC	
	Aperture 0.104 mm
	Wire Diameter 0.065 mm

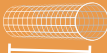
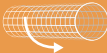
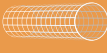
NEAREST IMPERIAL	
Mesh	150
SWG	45.5

Stock Status	Stocked
Finish	Nil
Weave Type	Plain Weave
Approx Kg/m ²	0.33 Kg/m ²
Approx % Open Area	38 %

TESTING / STANDARD
Mesh is Tested / Manufactured to [^]
ASTM E2016-15
'Standard Specification for Industrial Woven Wire Cloth' ✓

[^] Refer to Product Page for further information

Product Page www.sswm.com.au/product/stainless-steel-woven-wire-mesh
 Care Page www.sswm.com.au/stainless-steel-cleaning-maintenance
 Glossary Page www.sswm.com.au/what-is-stainless-steel

PRODUCT CODE	GRADE	 Width mm	 Length m	 Diam. mm	APPROX Kg/ROLL
SSWO 00104 1226	316	1220 mm	30 m	100 mm	12 Kg
SSWO 00104 1556	316	1550 mm	30 m	100 mm	15 Kg