



Look Us Up  
[www.sswm.com.au](http://www.sswm.com.au)



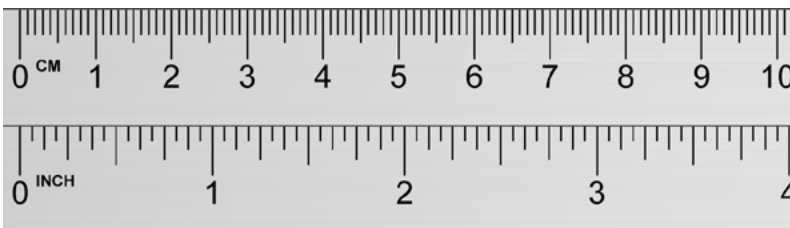
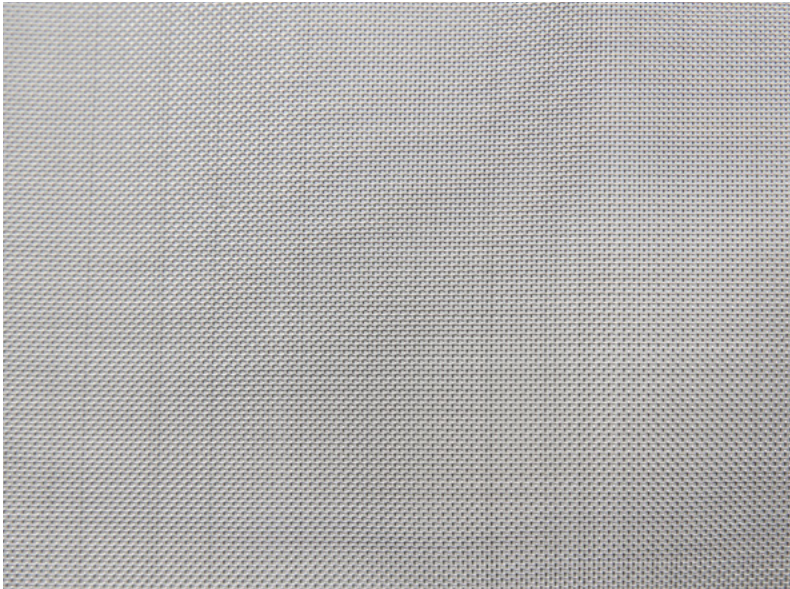
Email Us  
[sales@sswm.com.au](mailto:sales@sswm.com.au)



Call Us  
1300 305 148

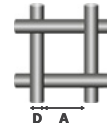


Superior Quality  
THE LASTING DECISION



Images are provided as a guide only

## METRIC



**Aperture** 0.415 mm

**Wire Diameter** 0.22 mm

## NEAREST IMPERIAL

**Mesh** 40

**SWG** 34

**Stock Status** Stocked

**Finish** Nil

**Weave Type** Plain Weave

**Approx Kg/m<sup>2</sup>** 0.99 Kg/m<sup>2</sup>

**Approx % Open Area** 43 %

## TESTING / STANDARD

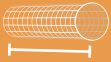
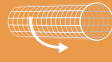
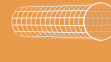
Mesh is Tested / Manufactured to<sup>^</sup>

**ASTM E2016-15**

'Standard Specification for Industrial Woven Wire Cloth' ✓

<sup>^</sup> Refer to Product Page for further information

**Product Page** [www.sswm.com.au/product/stainless-steel-woven-wire-mesh](http://www.sswm.com.au/product/stainless-steel-woven-wire-mesh)  
**Care Page** [www.sswm.com.au/stainless-steel-cleaning-maintenance](http://www.sswm.com.au/stainless-steel-cleaning-maintenance)  
**Glossary Page** [www.sswm.com.au/what-is-stainless-steel](http://www.sswm.com.au/what-is-stainless-steel)

PRODUCT CODE	GRADE	 Width mm	 Length m	 Diam. mm	APPROX Kg/ROLL
SSWO 00415 1246	316	1245 mm	30 m	100 mm	37 Kg
SSWO 00415 1554	304	1550 mm	30 m	100 mm	46 Kg
SSWO 00415 1556	316	1550 mm	30 m	100 mm	46 Kg