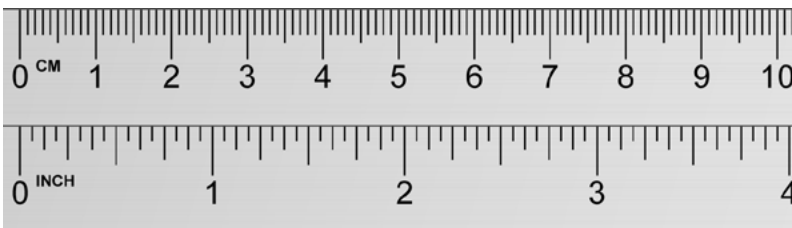
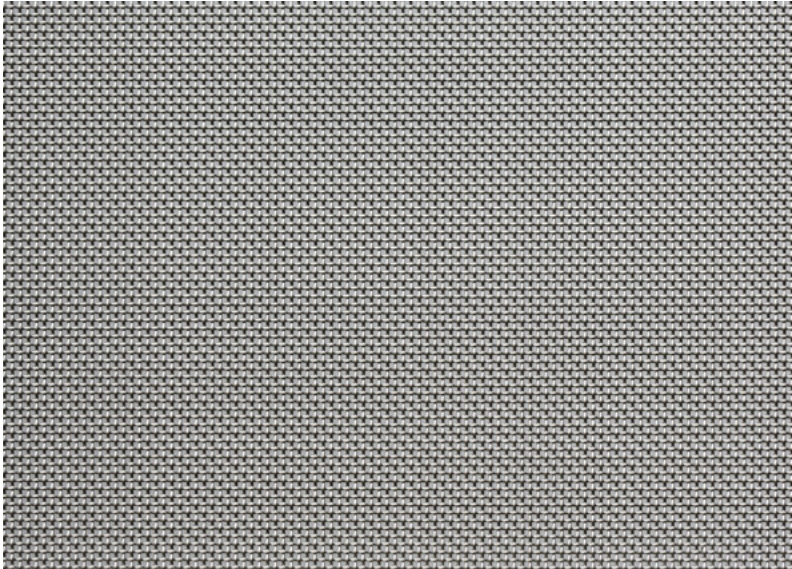
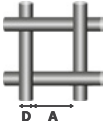


 Look Us Up www.sswm.com.au	 Email Us sales@sswm.com.au	 Call Us 1300 305 148	 Superior Quality THE LASTING DECISION
--	--	---	--



Images are provided as a guide only

METRIC	
	<p>Aperture 0.608 mm</p> <p>Wire Diameter 0.45 mm</p>

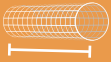


NEAREST IMPERIAL	
Mesh	24
SWG	26

Stock Status	Stocked
Finish	Nil
Weave Type	Plain Weave
Approx Kg/m²	2.39 Kg/m ²
Approx % Open Area	35 %

TESTING / STANDARD
Mesh is Tested / Manufactured to [^]
ASTM E2016-15 ✓
<small>'Standard Specification for Industrial Woven Wire Cloth'</small>

[^] Refer to Product Page for further information

Product Page www.sswm.com.au/product/stainless-steel-woven-wire-mesh
Care Page www.sswm.com.au/stainless-steel-cleaning-maintenance
Glossary Page www.sswm.com.au/what-is-stainless-steel

PRODUCT CODE	GRADE	 Width mm	 Length m	 Diam. mm	APPROX Kg/ROLL
SSWO 00608 1554	304	1550 mm	30 m	100 mm	111 Kg