

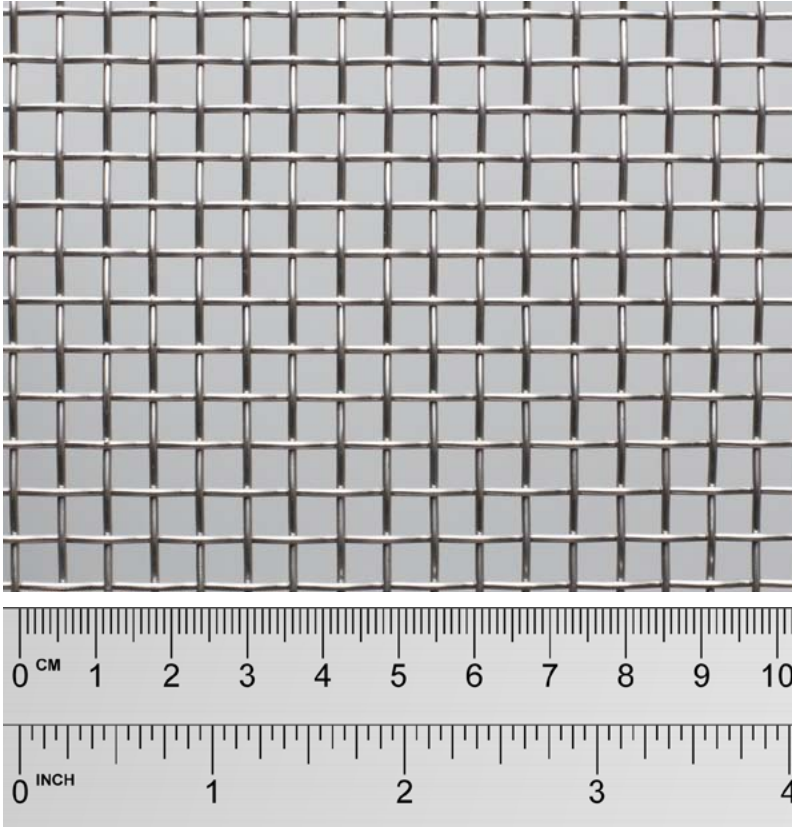
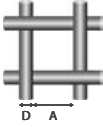
 Look Us Up <a href="http://www.sswm.com.au">www.sswm.com.au</a>	 Email Us <a href="mailto:sales@sswm.com.au">sales@sswm.com.au</a>	 Call Us 1300 305 148	 Superior Quality THE LASTING DECISION
--	--	---	--



Images are provided as a guide only

METRIC	
	Aperture 5.15 mm
	Wire Diameter 1.20 mm

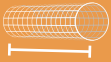

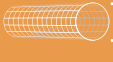
NEAREST IMPERIAL	
Mesh	4
SWG	18

Stock Status	Stocked
Finish	Nil
Weave Type	Plain Weave
Approx Kg/m <sup>2</sup>	2.95 Kg/m <sup>2</sup>
Approx % Open Area	66 %

TESTING / STANDARD
Mesh is Tested / Manufactured to <sup>^</sup>
ASTM E2016-15
'Standard Specification for Industrial Woven Wire Cloth' ✓

<sup>^</sup> Refer to Product Page for further information

Product Page [www.sswm.com.au/product/stainless-steel-woven-wire-mesh](http://www.sswm.com.au/product/stainless-steel-woven-wire-mesh)  
 Care Page [www.sswm.com.au/stainless-steel-cleaning-maintenance](http://www.sswm.com.au/stainless-steel-cleaning-maintenance)  
 Glossary Page [www.sswm.com.au/what-is-stainless-steel](http://www.sswm.com.au/what-is-stainless-steel)

PRODUCT CODE	GRADE	 Width mm	 Length m	 Diam. mm	APPROX Kg/ROLL
SSWO 05150 1244	304	1245 mm	30 m	350 mm	110 Kg
SSWO 05150 1554	304	1550 mm	30 m	350 mm	137 Kg