



Look Us Up
www.sswm.com.au



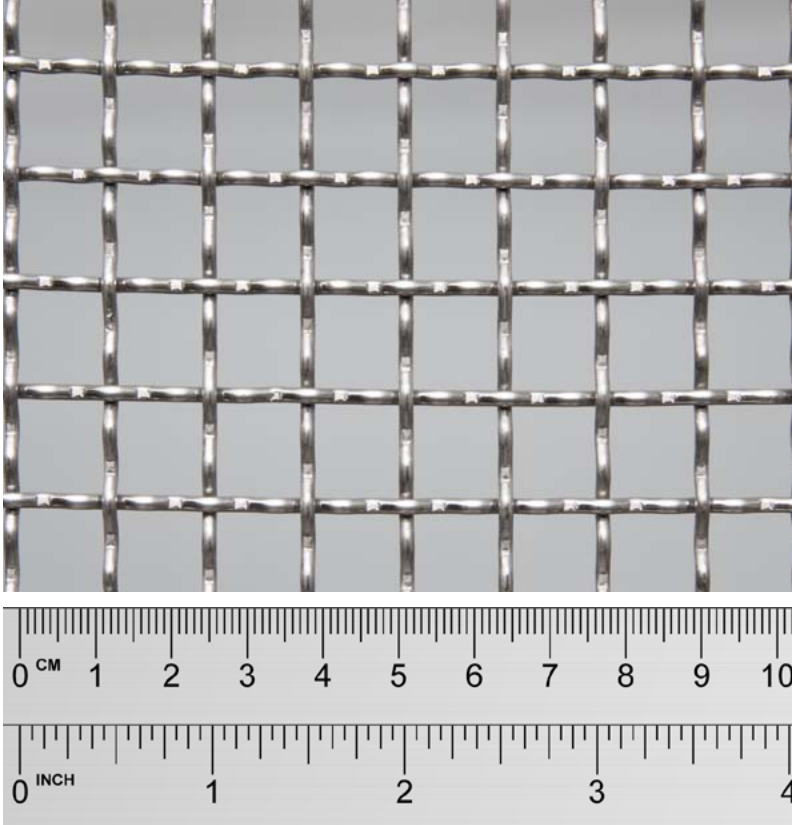
Email Us
sales@sswm.com.au



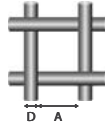
Call Us
1300 305 148



Superior Quality
THE LASTING DECISION



Images are provided as a guide only

METRIC	
	Aperture 10.7 mm
	Wire Diameter 2.00 mm

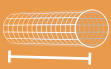
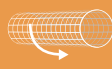

NEAREST IMPERIAL	
Mesh	2
SWG	14

Stock Status	Stocked
Finish	Nil
Weave Type	Inter Crimp
Approx Kg/m ²	4.10 Kg/m ²
Approx % Open Area	71 %

TESTING / STANDARD
Mesh is Tested / Manufactured to [^]
ASTM E2016-15 'Standard Specification for Industrial Woven Wire Cloth' ✓

[^] Refer to Product Page for further information

Product Page	www.sswm.com.au/product/stainless-steel-woven-wire-mesh
Care Page	www.sswm.com.au/stainless-steel-cleaning-maintenance
Glossary Page	www.sswm.com.au/what-is-stainless-steel

PRODUCT CODE	GRADE	 Width mm	 Length m	 Diam. mm	APPROX Kg/ROLL
SSWO 10700 1244 IC	304	1245 mm	30 m	500 mm	153 Kg
SSWO 10700 1246 IC	316	1245 mm	30 m	500 mm	153 Kg
SSWO 10700 1554 IC	304	1550 mm	30 m	500 mm	191 Kg