

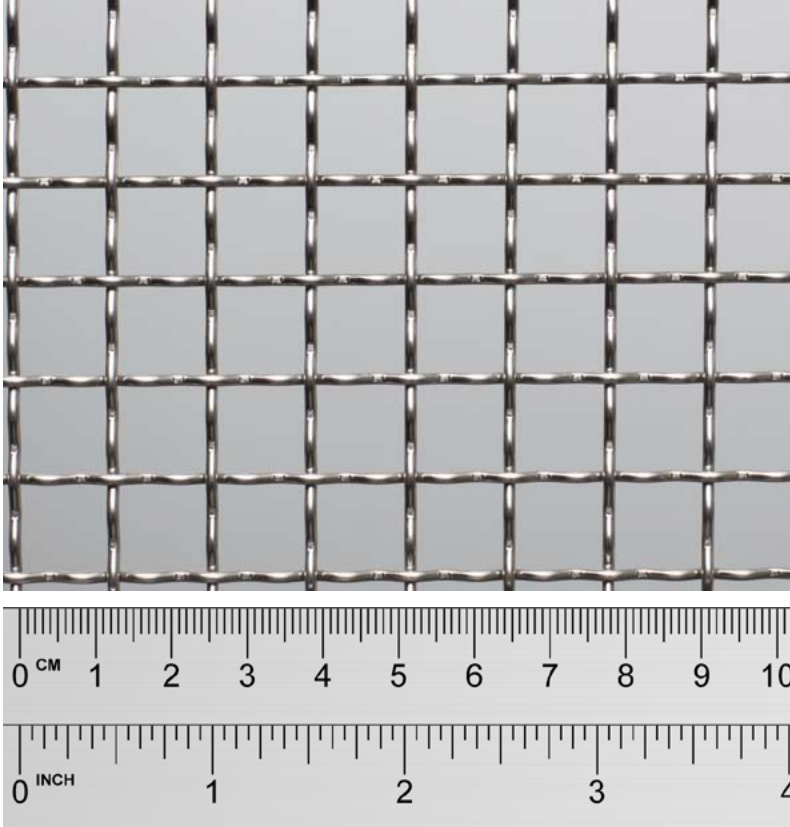
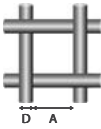
 Look Us Up www.sswm.com.au	 Email Us sales@sswm.com.au	 Call Us 1300 305 148	 Superior Quality THE LASTING DECISION
--	--	---	--



Images are provided as a guide only

METRIC	
	Aperture 11.1 mm
	Wire Diameter 1.60 mm

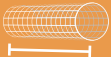

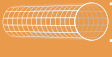
NEAREST IMPERIAL	
Mesh	2
SWG	16

Stock Status	Stocked
Finish	Nil
Weave Type	Inter Crimp
Approx Kg/m ²	2.63 Kg/m ²
Approx % Open Area	76 %

TESTING / STANDARD
Mesh is Tested / Manufactured to [^]
ASTM E2016-15
'Standard Specification for Industrial Woven Wire Cloth' ✓

[^] Refer to Product Page for further information

Product Page	www.sswm.com.au/product/stainless-steel-woven-wire-mesh
Care Page	www.sswm.com.au/stainless-steel-cleaning-maintenance
Glossary Page	www.sswm.com.au/what-is-stainless-steel

PRODUCT CODE	GRADE	 Width mm	 Length m	 Diam. mm	APPROX Kg/ROLL
SSWO 11100 1244 IC	304	1245 mm	30 m	400 mm	98 Kg
SSWO 11100 1246 IC	316	1245 mm	30 m	400 mm	98 Kg