



Look Us Up  
[www.sswm.com.au](http://www.sswm.com.au)



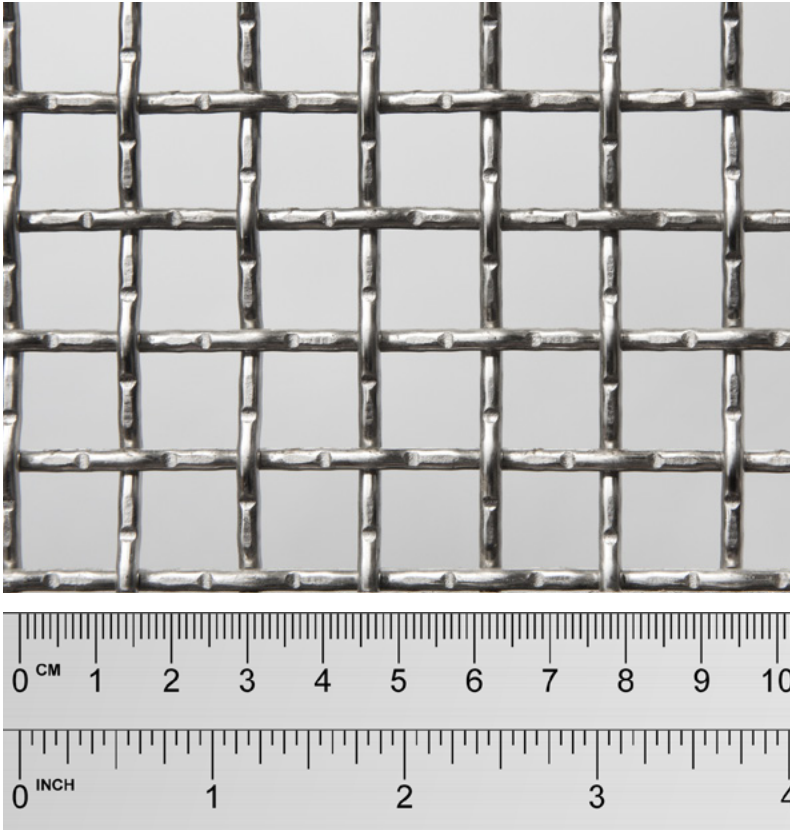
Email Us  
[sales@sswm.com.au](mailto:sales@sswm.com.au)



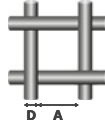
Call Us  
1300 305 148



Superior Quality  
THE LASTING DECISION



Images are provided as a guide only

METRIC	
	<b>Aperture</b> 12.88 mm
	<b>Wire Diameter</b> 3.00 mm

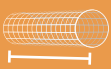
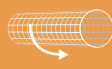
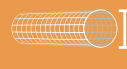
NEAREST IMPERIAL	
<b>Mesh</b>	1.6
<b>SWG</b>	10

<b>Stock Status</b>	Stocked
<b>Finish</b>	Nil
<b>Weave Type</b>	Lock Crimp
<b>Approx Kg/m<sup>2</sup></b>	7.39 Kg/m <sup>2</sup>
<b>Approx % Open Area</b>	66 %

TESTING / STANDARD
Mesh is Tested / Manufactured to <sup>^</sup>
<b>ASTM E2016-15</b> ✓
*Standard Specification for Industrial Woven Wire Cloth

<sup>^</sup> Refer to Product Page for further information

<b>Product Page</b>	<a href="http://www.sswm.com.au/product/stainless-steel-woven-wire-mesh">www.sswm.com.au/product/stainless-steel-woven-wire-mesh</a>
<b>Care Page</b>	<a href="http://www.sswm.com.au/stainless-steel-cleaning-maintenance">www.sswm.com.au/stainless-steel-cleaning-maintenance</a>
<b>Glossary Page</b>	<a href="http://www.sswm.com.au/what-is-stainless-steel">www.sswm.com.au/what-is-stainless-steel</a>

PRODUCT CODE	GRADE	 Width mm	 Length m	 Diam. mm	APPROX Kg/ROLL
SSWO 12880 1246 LC	316	1245 mm	30 m	600 mm	276 Kg