



**Vermin & Rodent Mesh 6.35mm 0.63mm**



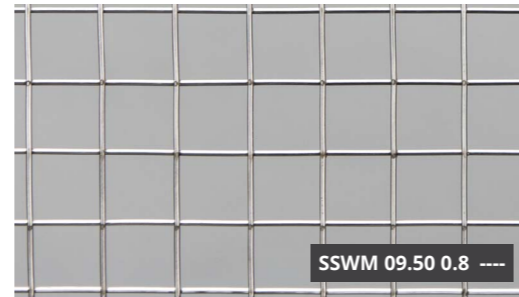
Mesh	6.35 x 6.35 mm	Rolls: 30 m
Diameter	0.63 mm	
Finish	Mill	
Kg/m <sup>2</sup>	0.79 Kg/m <sup>2</sup>	
% Open	81 % Approx	
Grade	304 / 316	

**Vermin & Rodent Mesh 6.35mm 0.80mm**



Mesh	6.35 x 6.35 mm	Rolls: 30 m
Diameter	0.80 mm	
Finish	Mill	
Kg/m <sup>2</sup>	1.26 Kg/m <sup>2</sup>	
% Open	76 % Approx	
Grade	304 / 316	

**Vermin & Rodent Mesh 9.50mm 0.80mm**



Mesh	9.50 x 9.50 mm	Rolls: 30 m
Diameter	0.80 mm	
Finish	Mill	
Kg/m <sup>2</sup>	0.82 Kg/m <sup>2</sup>	
% Open	84 % Approx	
Grade	316	

**Vermin & Rodent Mesh 9.50mm 1.00mm**



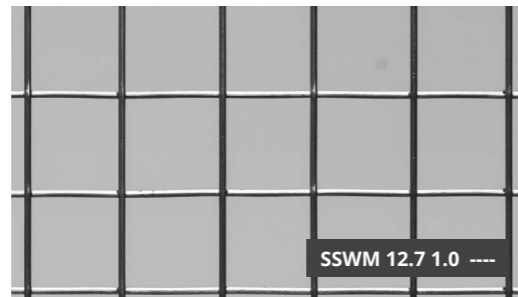
Mesh	9.50 x 9.50 mm	Rolls: 30 m
Diameter	1.00 mm	
Finish	Mill	
Kg/m <sup>2</sup>	1.31 Kg/m <sup>2</sup>	
% Open	80 % Approx	
Grade	304 / 316	

**Vermin & Rodent Mesh 11.0mm 0.80mm**



Mesh	11.0 x 11.0 mm	Rolls: 30 m
Diameter	0.80 mm	
Finish	Mill	
Kg/m <sup>2</sup>	0.74 Kg/m <sup>2</sup>	
% Open	86 % Approx	
Grade	304 / 316	

**Vermin & Rodent Mesh 12.7mm 1.00mm**



Mesh	12.7 x 12.7 mm	Rolls: 30 m
Diameter	1.00 mm	
Finish	Mill	
Kg/m <sup>2</sup>	0.98 Kg/m <sup>2</sup>	
% Open	85 % Approx	
Grade	304 / 316	

**Vermin & Rodent Mesh 12.7mm 1.20mm**



Mesh	12.7 x 12.7 mm	Rolls: 30 m
Diameter	1.20 mm	
Finish	Mill	
Kg/m <sup>2</sup>	1.75 Kg/m <sup>2</sup>	
% Open	82 % Approx	
Grade	304 / 316	

**Vermin & Rodent Mesh 12.7mm 1.60mm**



Mesh	12.7 x 12.7 mm	Rolls: 30 m
Diameter	1.60 mm	
Finish	Mill	
Kg/m <sup>2</sup>	2.51 Kg/m <sup>2</sup>	
% Open	76 % Approx	
Grade	304 / 316	

**Vermin & Rodent Mesh 25.4mm 1.60mm**



Mesh	25.4 x 25.4 mm	Rolls: 30 m
Diameter	1.60 mm	
Finish	Mill	
Kg/m <sup>2</sup>	1.26 Kg/m <sup>2</sup>	
% Open	88 % Approx	
Grade	316	

**Vermin & Rodent Mesh 25.4mm 2.00mm**



Mesh	25.4 x 25.4 mm	Rolls: 30 m
Diameter	2.00 mm	
Finish	Mill	
Kg/m <sup>2</sup>	1.97 Kg/m <sup>2</sup>	
% Open	85 % Approx	
Grade	304 / 316	

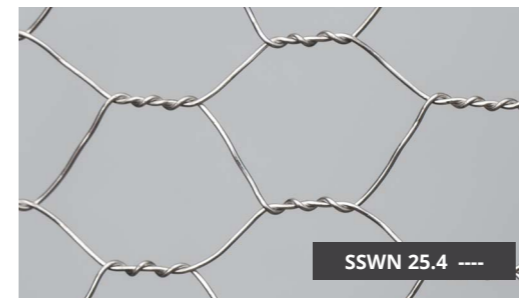
**Hexagonal Netting Flexi 12.7mm**



Aperture	12.7 mm	Rolls: 30 m
Diameter	0.63 mm	
Finish	Mill	
Type	Hexagonal Netting	
Edge Wires	Double Top & Bottom	
Grade	316	

Hexagonal Netting photo is not to scale

**Hexagonal Netting Flexi 25.4mm**



Aperture	25.4 mm	Rolls: 30 m
Diameter	0.90 mm	
Finish	Mill	
Weave Type	Hexagonal Netting	
Edge Wires	Double Top & Bottom	
Grade	316	

Hexagonal Netting photo is not to scale

You have made 'The Lasting Decision' and now it is time to evaluate 'The Lasting Look'.

**Design & Install Considerations:**  
Practical information for your consideration.

**Cleaning, Care & Maintenance:**  
Regular cleaning is recommended to prevent the build-up of contaminants such as dirt and salt.

**Technical Information to assist with selection & specifying**

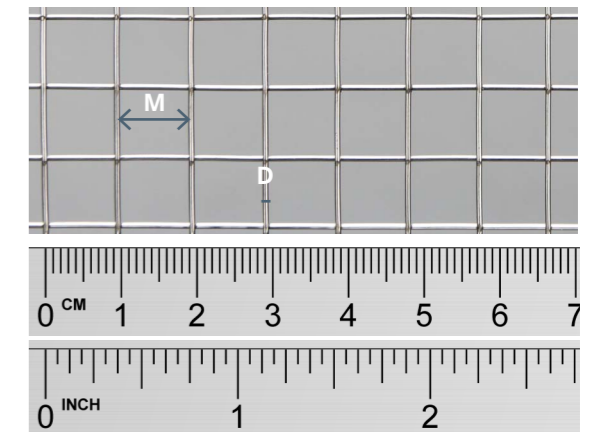
**Technical Data Sheets:**  
Our technical data sheets are an incredibly powerful tool and available on [sswm.com.au](http://sswm.com.au)

**Samples:**  
Please contact [sales@sswm.com.au](mailto:sales@sswm.com.au) to request samples of our Vermin & Rodent Mesh range to determine which mesh best meets your requirements.

**Glossary Welded Mesh:**

**Mesh (welded)** - The distance between two adjacent parallel wires, measured from centre to centre of the wires.

**Diameter** - the thickness of the wire before processing



*This document is to scale when printed to A3 with no scaling applied. Please use ruler above to check your scale. Images are provided as a guide only.*